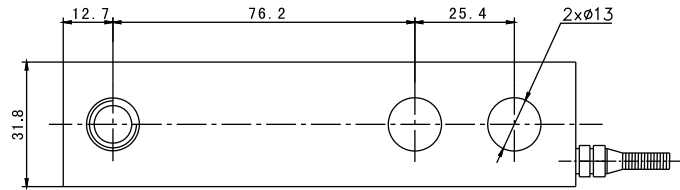
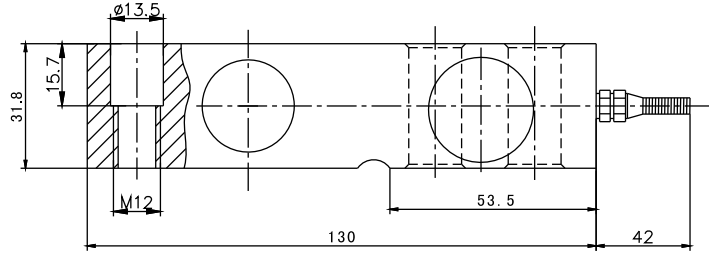


## SQB Load cell

SQB



配料控制系统、平台秤  
Blending control system, low platform scale

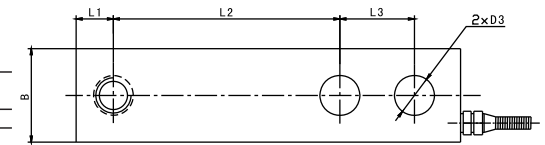
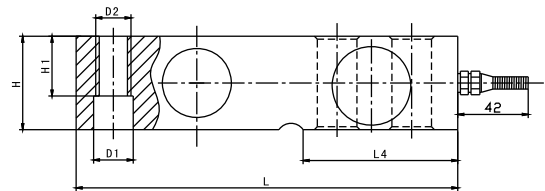
### TECHNICAL PARAMETER

4Wires: Exc+(红, Red); Exc-(黑, Black); Sig+(绿, Green); Sig-(白, White)

额定载荷 Rated load	0.1、0.15、0.2、0.25、0.3、0.5、0.75、1、1.5、2、2.5t	输出阻抗 Output resistance	$352 \pm 3 \Omega$
精度等级 Accuracy class	C2~C3	绝缘电阻 Insulation resistance	$\geq 5000 M\Omega$
灵敏度 Sensitivity	0.1~0.3t: $2.0 \pm 0.002 mV/V$ 0.5~2.5t: $3.0 \pm 0.003 mV/V$	额定温度 Nominal Temp Range	$-10 \sim +40^\circ C$
线性误差 Non-linearity	$\pm 0.03\% F.S$	工作温度范围 Service Temp Range	$-30 \sim +70^\circ C$
滞后误差 Hysteresis error	$\pm 0.03\% F.S$	安全负载 Safe load limit	150% F.S
蠕变 (30分钟) Creep(30min)	$\pm 0.02\% F.S$	破坏负载 Breaking load	200% F.S
零点温度影响 TC ZERO	$\pm 0.02\% F.S/10^\circ C$	额定激励电压 Nominal of range excitation	10~12 V DC
灵敏度温度影响 TC SPAN	$\pm 0.02\% F.S/10^\circ C$	密封等级 Protection Class	IP67(0.1~0.75t) IP68(1~2.5t)
输入阻抗 Input resistance	$400 \pm 20 \Omega$	材料 Material	合金钢 Alloy Steel
		电缆 Cable	Length: 1.5m:3m 比例 1:1

## SQB Load cell

SQB



额定载荷(t) Rated Load	L	L1	L2	L3	L4	H/B	H1	D1	D2	D3
3.5	171.5	19	95.3	38.1	72.5	38.1	26	$\phi 20$	M18x1.5	$\phi 20$
7.5~10	225.5	25.3	124	50.8	102	50.8	25.4	$\phi 27$	M24x2	$\phi 27$

平台秤、配料控制系统  
Platform scales, blending scale

### TECHNICAL PARAMETER

4Wires: Exc+(红, Red); Exc-(黑, Black); Sig+(绿, Green); Sig-(白, White)

额定载荷 Rated load	3、5、7.5、10t	绝缘电阻 Insulation resistance	$\geq 5000 M\Omega$
精度等级 Accuracy class	0.03	额定温度 Nominal Temp Range	$-10 \sim +40^\circ C$
灵敏度 Sensitivity	$3.0 \pm 0.003 mV/V$	工作温度范围 Service Temp Range	$-30 \sim +70^\circ C$
线性误差 Non-linearity	$\pm 0.03\% F.S$	安全负载 Safe load limit	150% F.S
滞后误差 Hysteresis error	$\pm 0.03\% F.S$	破坏负载 Breaking load	200% F.S
蠕变 (30分钟) Creep(30min)	$\pm 0.02\% F.S$	额定激励电压 Nominal of range excitation	10~12 V DC
零点温度影响 TC ZERO	$\pm 0.02\% F.S/10^\circ C$	密封等级 Protection Class	IP68
灵敏度温度影响 TC SPAN	$\pm 0.02\% F.S/10^\circ C$	材料 Material	合金钢 Alloy Steel
输入阻抗 Input resistance	$400 \pm 20 \Omega$	电缆 Cable	Length: 4.2m (3t~5t)
输出阻抗 Output resistance	$352 \pm 3 \Omega$		5m(7.5t~10t)